

# Service Document Exchange Set

## RCD 1410

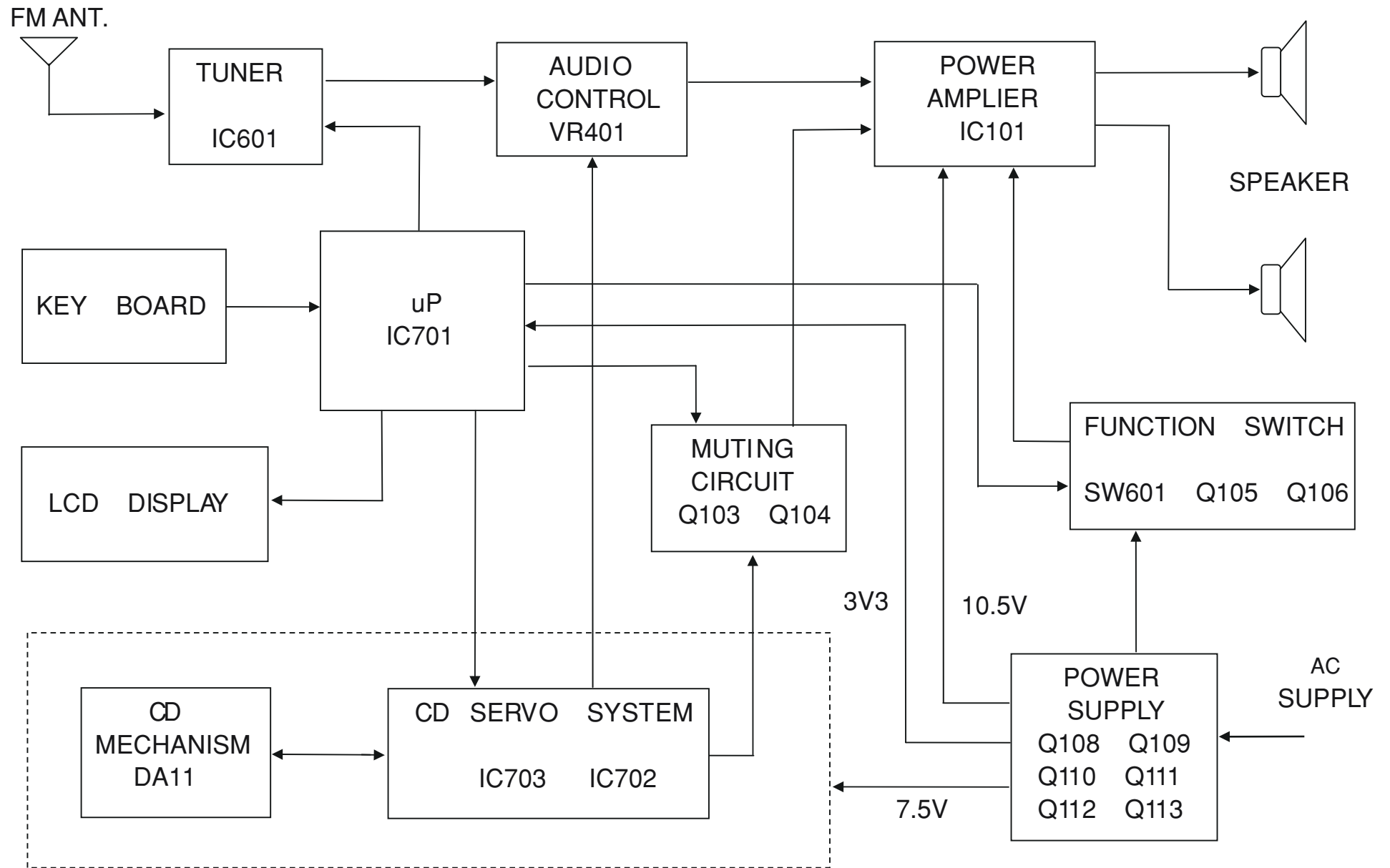
<b>Service Manual</b>
<b>Sicherheit Safety</b>
Materialnr./Part No. 720108000001



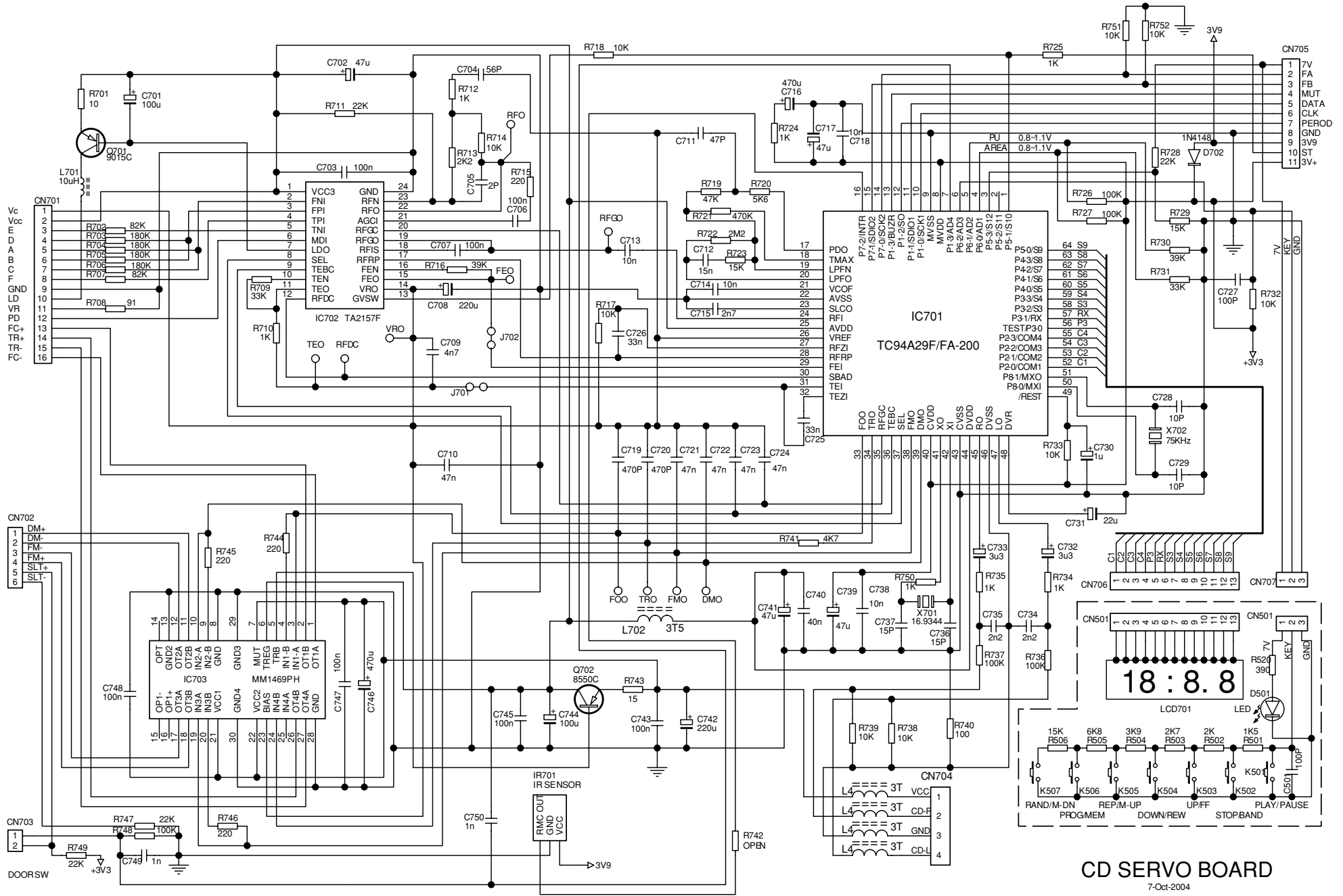
Es gelten die Vorschriften und Sicherheitshinweise gemäß dem Service Manual "Sicherheit", Materialnummer 720108000001, sowie zusätzlich die eventuell abweichenden, landesspezifischen Vorschriften!



The regulations and safety instructions shall be valid as provided by the "Safety" Service Manual, part number 720108000001, as well as the respective national deviations.

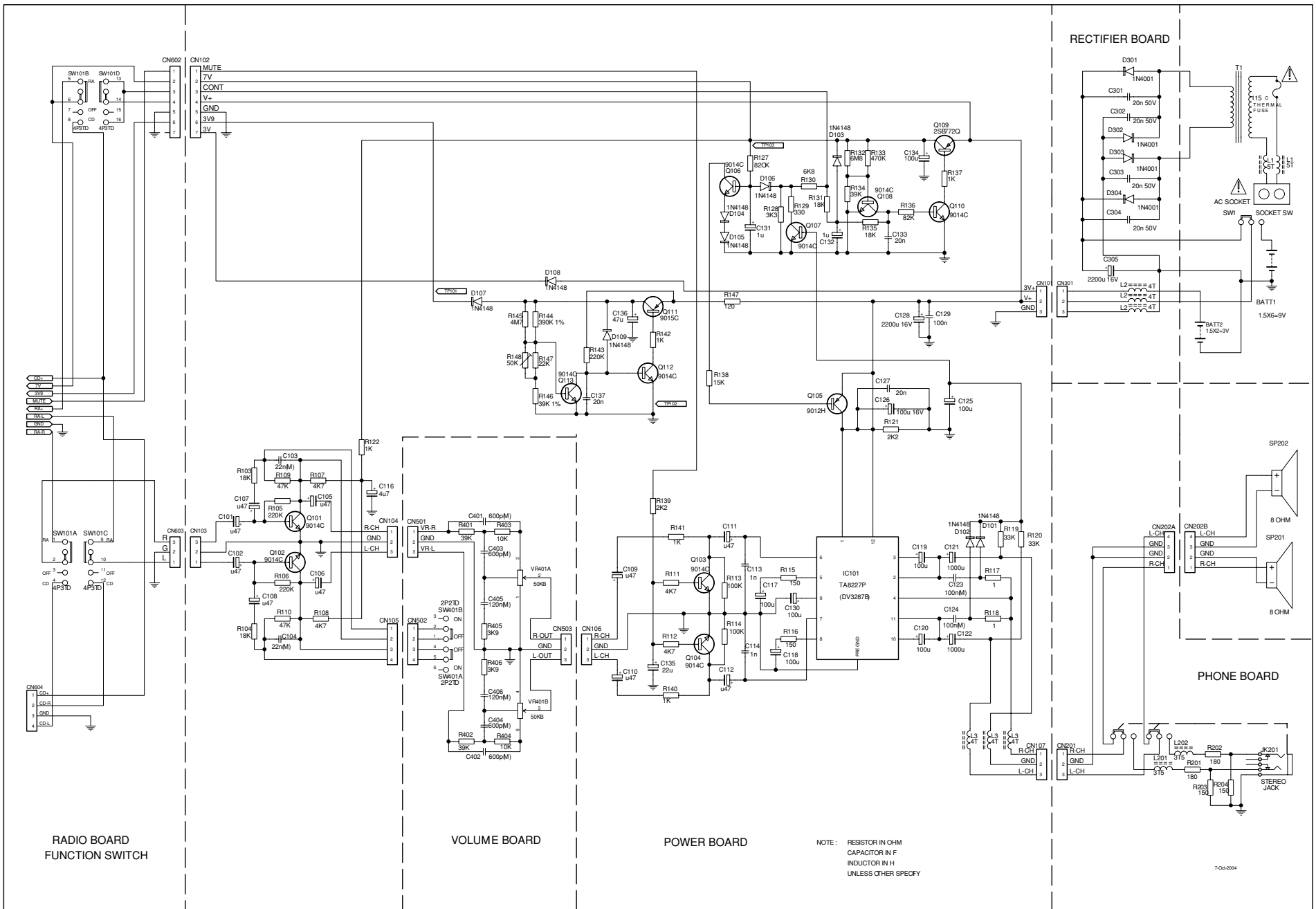


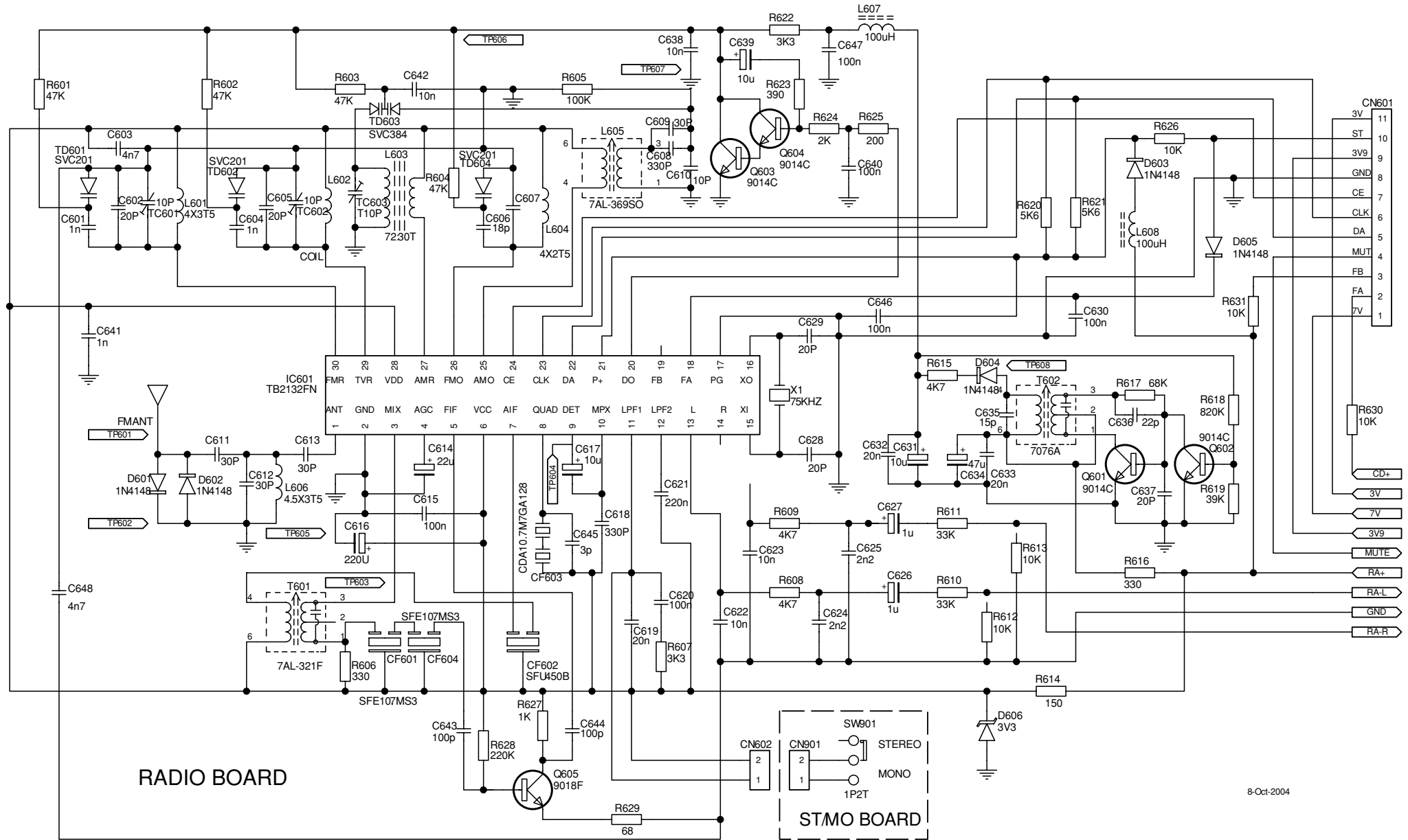




**CD SERVO BOARD**

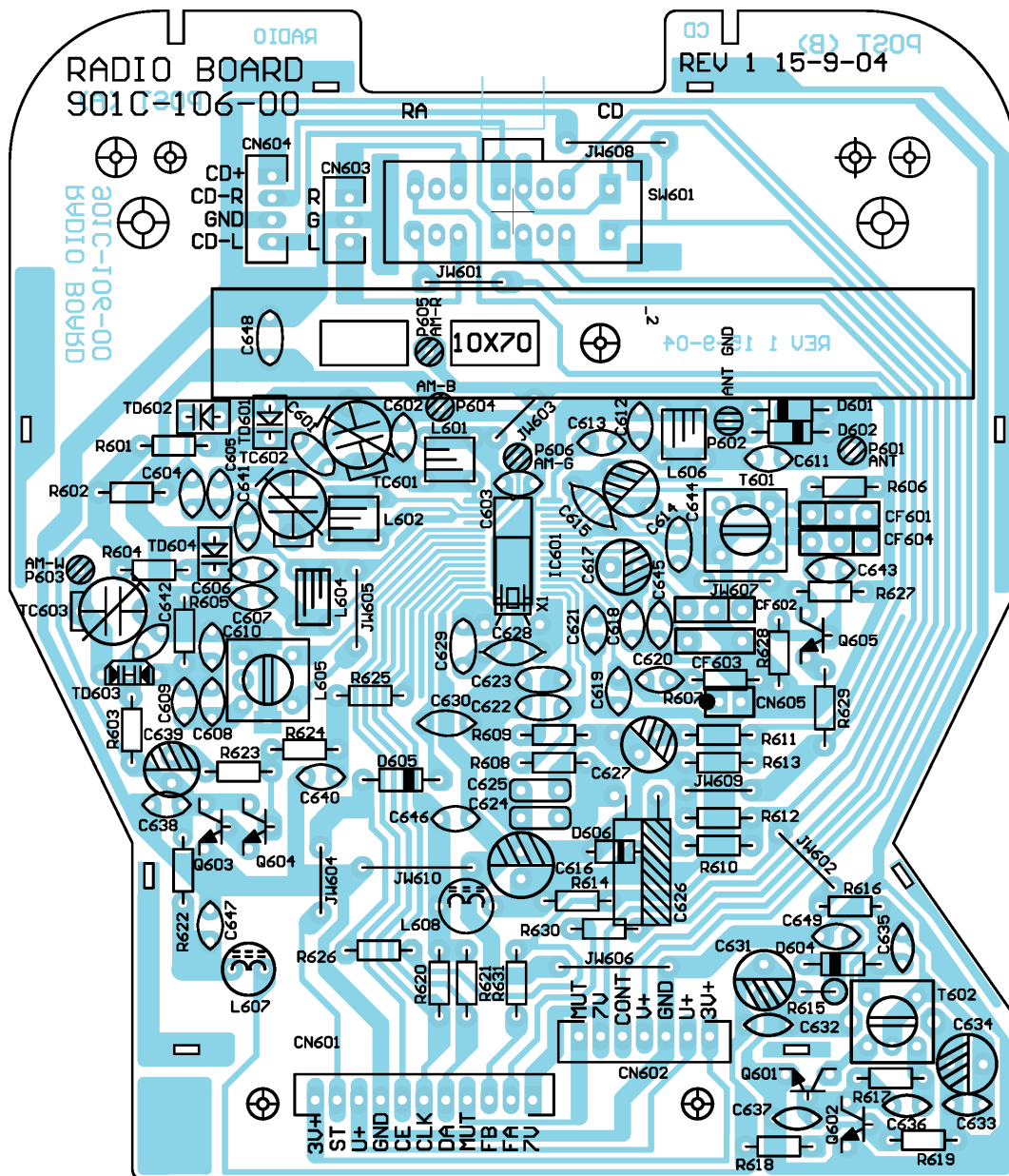
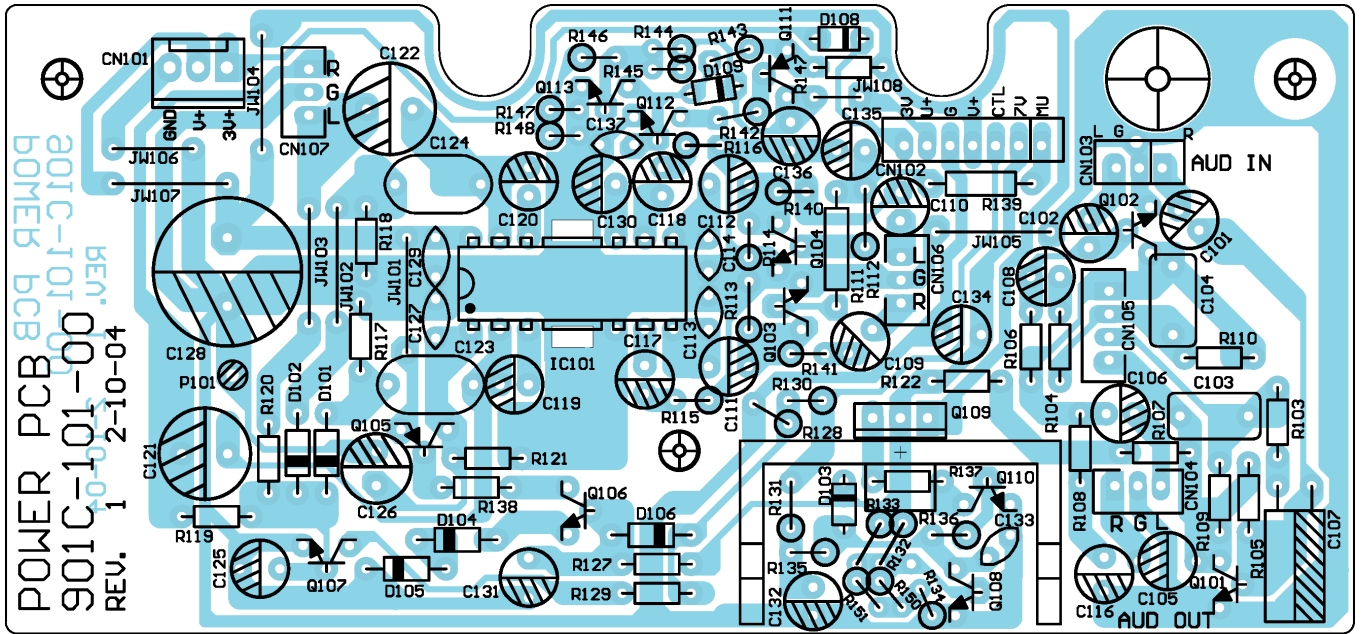
7-Oct-2004



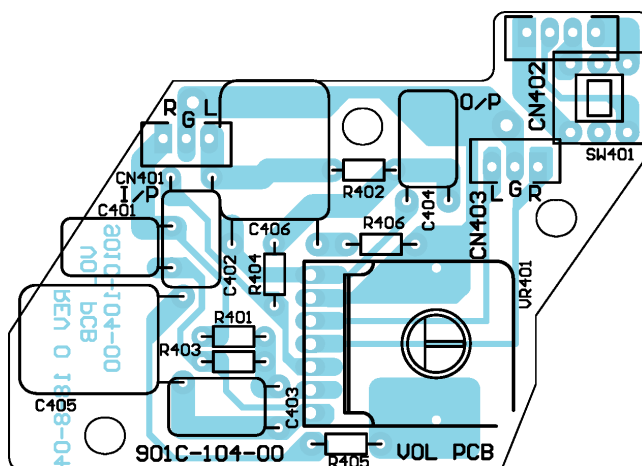
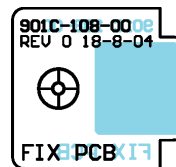
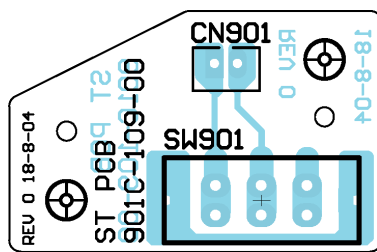
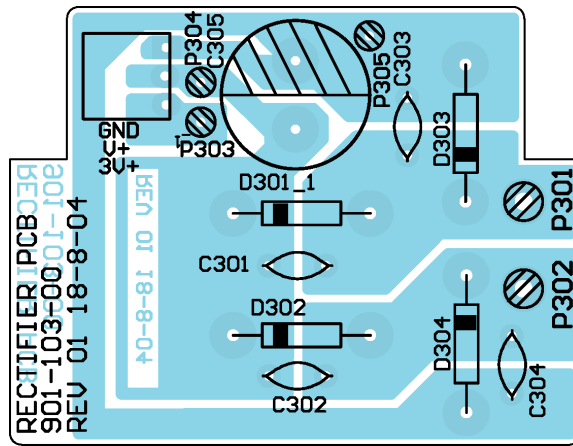
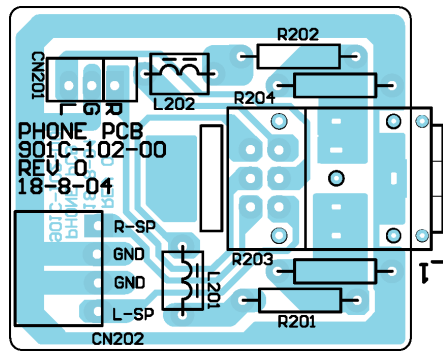












# ALIGNMENT PROCEDURE

## INSTRUMENTS REQUIRED

1. Signal Generator
2. FM Signal Generator
3. FM/AM IF Sweep Generator (10.7 MHz for FM)
4. VTVM
5. Oscilloscope
6. Frequency counter
7. Regulated DC power supply

## GENERAL PREPARATION

1. Check source voltage, DC or AC according to specifications
2. Set function switch to band being aligned
3. Signal input should be kept as low as possible to avoid AGC and AFC function
4. Standard modulation :
  - AM 1 KHz 30% mod
  - FM 1 KHz 22.5 KHz dev

## AM IF ALIGNMENT

STEP	SIGNAL SOURCE (AM RF Gen.) CONNECT TO	SET SIGNAL TO	ALIGNMENT INDICATOR (Oscilloscope, VTVM) CONNECT TO	SET RADIO DIAL TO	ADJUST	ADJUST FOR	REMARKS
1	A standard radiation loop	450KHz	TP604 Detector output terminal and ground (TP605)	Quiet Point	T601	Maximum	Volume control at min. position
2	Repeat step 1 for max. output						

## FM IF ALIGNMENT

This model requires no FM IF alignment as the IF is fixed by ceramic filter and discriminator CF601, CF604 & CF603. Please take note that correct type and same color dot of ceramic filter is used in servicing, diff color dot of ceramic filter may cause worse IF 'S' curve characteristic and distortion.

Connect IF genescope output terminal to TP603 & TP602 (GND) in series with a 1000Pf capacitor, connect scope input terminal to TP604 & TP605 (GND), then the IF characteristic curve can be observed.

# ALIGNMENT PROCEDURE

## FM RF ALIGNMENT

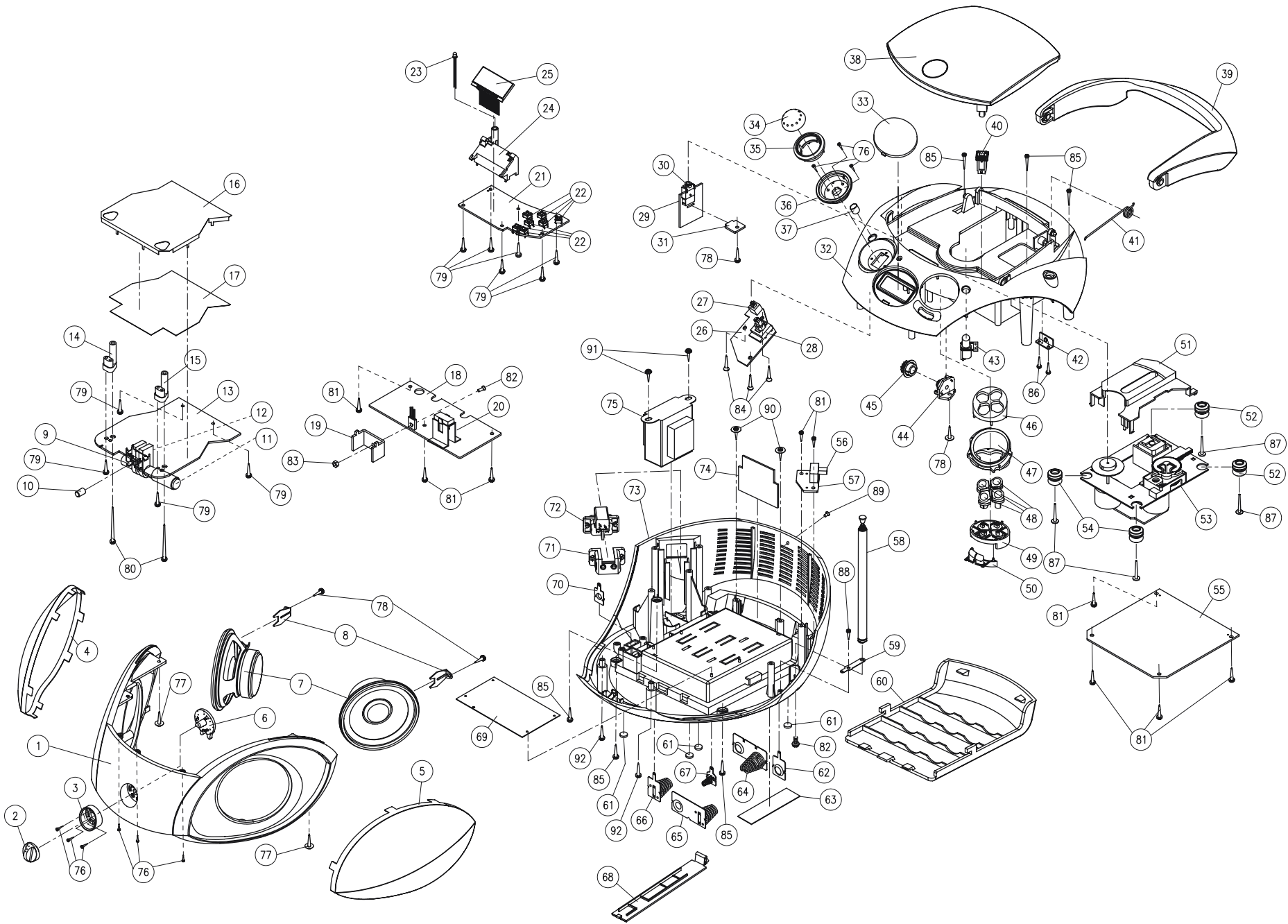
STEP	SIGNAL SOURCE (FM Signal Gen.) CONNECT TO	SET SIGNAL TO	ALIGNMENT INDICATOR (Oscilloscope, VTVM) CONNECT TO	SET RADIO DIAL TO	ADJUST	ADJUST FOR	REMARKS
1	TP601 & TP602 through matching network if necessary		Terminals across speaker voice coil	(Lowest end)	NA	NA	Digital DC Volt meter is Connected to TP606 and grg
2				(Highest end)	L604 (Osc. Coil) stretch or squeeze	DC8.0V ±0.1V	
3		88 MHz (modulated)		88 MHz	L601 (RF coil) stretch or squeeze	Maximum	Volume control at max. position
4		106 MHz (modulated)		106 MHz	TC 601 (RF trimmer)		
5		Repeat steps 3 and 4 as necessary to minimize tracking error and also steps 1 and 2 if necessary					

## FM MPX ALIGNMENT (NA)

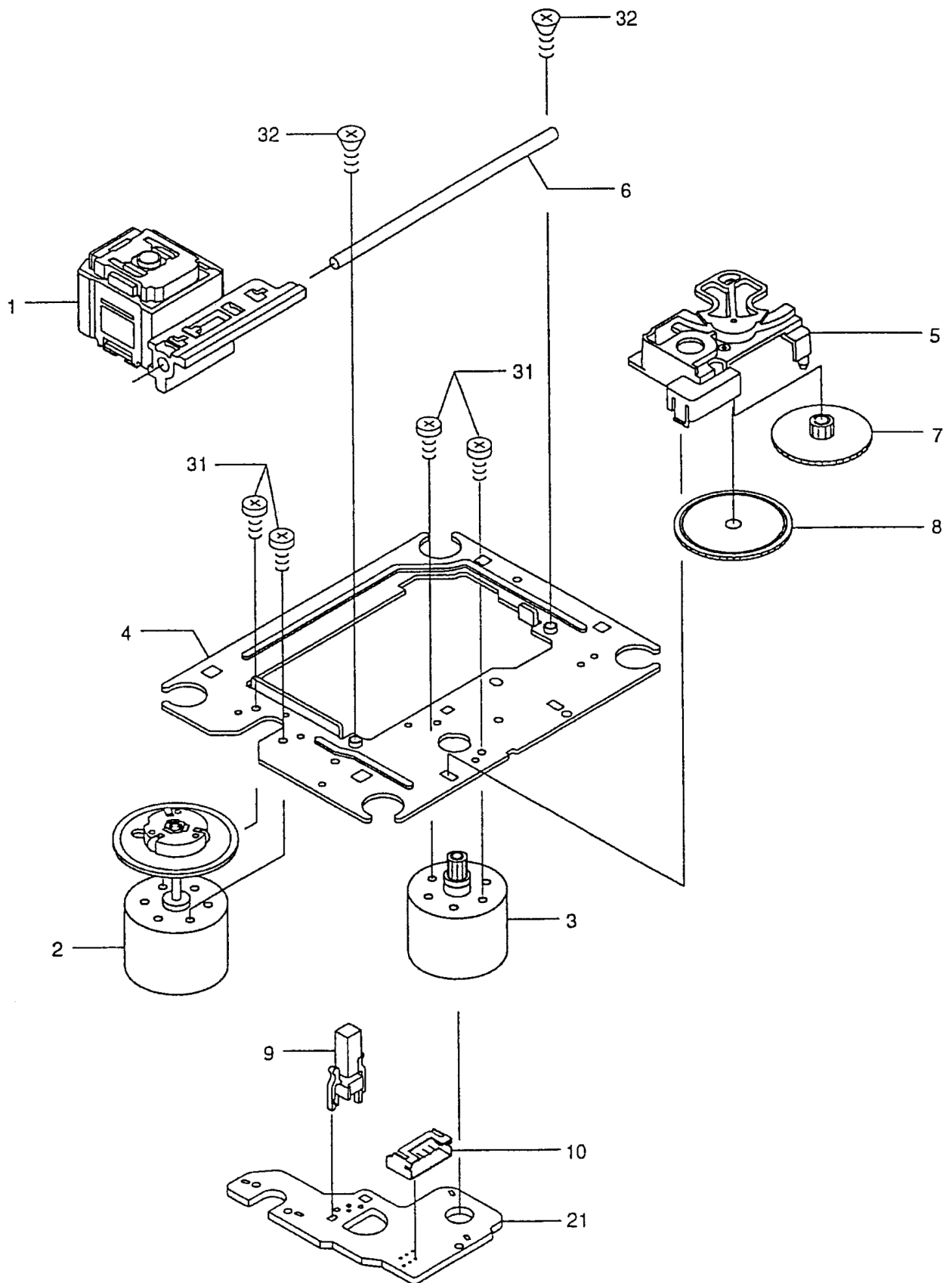
SIGNAL SOURCE	SET SIGNAL TO	ALIGNMENT INDICATOR (Frequency Counter) CONNECT TO	SET RADIO DIAL TO	ADJUST	ADJUST FOR	REMARKS

## AM RF ALIGNMENT

STEP	SIGNAL SOURCE (AM Signal Gen.) CONNECT TO	SET SIGNAL TO	ALIGNMENT INDICATOR (Oscilloscope, VTVM) CONNECT TO	SET RADIO DIAL TO	ADJUST	ADJUST FOR	REMARKS
1	A standard radiation loop ant.		Across speaker voice coil	(Lowest end)	NA	NA	Digital DC Volt meter is Connected to TP606 and grg
2				(Highest end)	L 605 (Osc.Coil)	DC8.0V ±0.1V	
3		558 KHz (modulated)		558 KHz	MW COIL (ant. coil)	Maximum	Volume control at max. position
4		1440 KHz (modulated)		1440 KHz	TC 603 (ant. trimmer)		
5		Repeat steps 3 and 4 as necessary to minimize tracking error and also steps 1 and 2 if necessary					



# DA11 B3N CD PLAYER MECHANISM EXPLODED VIEW



## Ersatzteilliste Spare Parts List

**NUR FÜR INTERNEN GEBRAUCH  
FOR INTERNAL USE ONLY**

# AUDIO

## 11 / 2004

## RCD 1410

MATERIAL-NR. / PART NO.: 757123395000

BESTELL-NR. / ORDER NO.: GDP5000 SILBER/WEISS / SILVER/WHITE

POS. NR. POS. NO.	ABB. FIG.	MATERIAL-NR. PART NUMBER	ANZ. QTY.	BEZEICHNUNG 	DESCRIPTION 
		757123395000		RCD 1410 SILBER / WEISS <b>TAUSCHGERAET</b>	RCD 1410 SILVER / WHITE <b>EXCHANGE SET</b>
0038.000		759551083600		DECKEL CD	CD DOOR
0039.000		759551083500		TRAGEGRIFF	HANDLE
0041.000		759551081900		FEDER CD TUER	CD DOOR SPRING
0053.000		759550615100		LAUFWERK CD DA11-T3CN	CD MECHANISM DA11-T3CN
0058.000		759551082900		TELESKOPANTENNE TA78096	FM ROD ANTENNA TA78096
0060.000		759551083300		TUERE BATTERIEFACH	BATTERY DOOR
0068.000		759551083400		BATTERIEFACHABDECKUNG	BATTERY COVER
0100.000		759525012400		NETZKABEL	POWER CORD
		720114048500		BEDIENUNGSANLEITUNG D/GB/F/I/P/E/NL/PL/DK/S/FIN	INSTRUCTION MANUAL D/GB/F/I/P/E/NL/PL/DK/S/FIN

Es gelten die Vorschriften und Sicherheitshinweise gemäß dem Service Manual "Sicherheit", Mat.-Nummer 720108000001, sowie zusätzlich die eventuell abweichenden, landesspezifischen Vorschriften!



The regulations and safety instructions shall be valid as provided by the "Safety" Service Manual, part number 720108000001, as well as the respective national deviations.

ÄNDERUNGEN VORBEHALTEN / SUBJECT TO ALTERATION